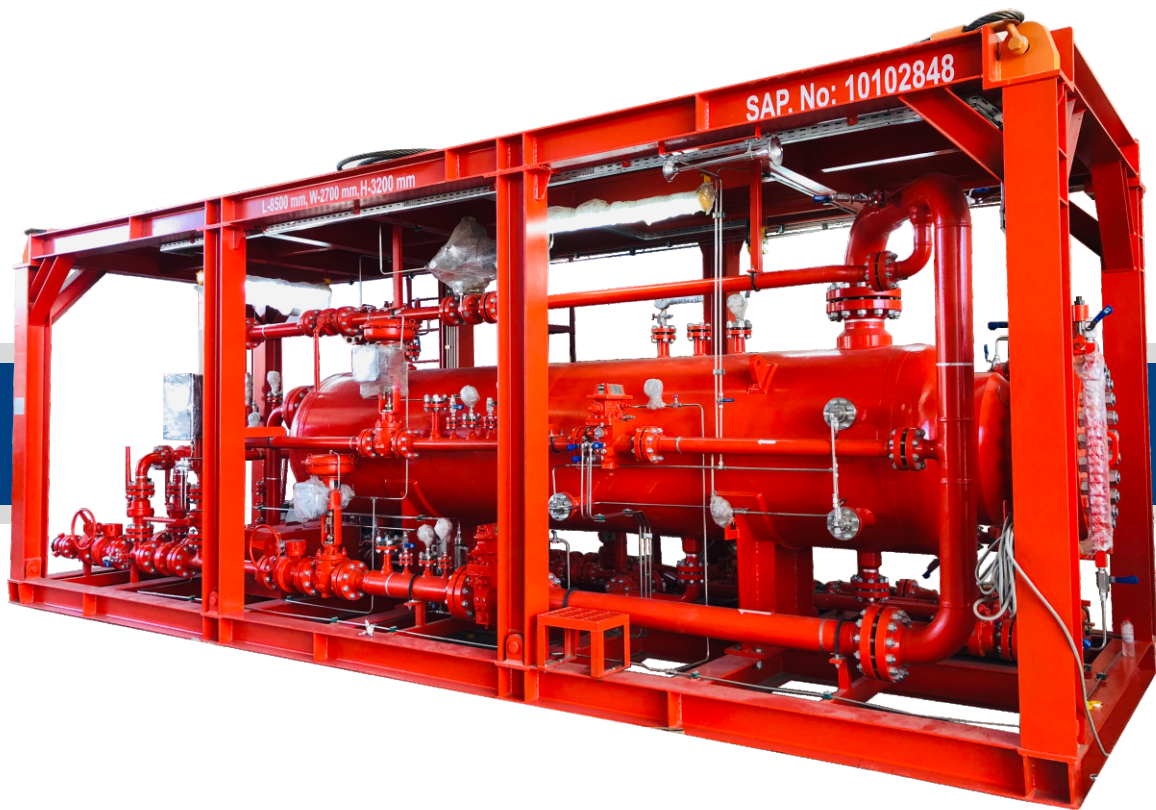




# ***SURFACE WELL TEST SEPARATOR SKIDS***

**(2-PHASE / 3-PHASE / 4-PHASE)**



SPARKLET ENGINEERS MIDDLE EAST FZE specializes in the design and manufacturing of high-performance test separator skids configured for 2-phase, 3-phase, or 4-phase operation. These units are designed to separate well effluents into oil, gas, water, and solids (as applicable) while providing accurate measurement and reliable operation in both sweet and sour service conditions. Built to international standards and tailored to client-specific requirements, Sparklet separators are trusted across the MENA region for their dependability and flexibility.

## Technical Specifications

Parameter	Specification
<b>Design Code &amp; Standards</b>	ASME Sec VIII Div.1, API, NACE MR0175
<b>Service</b>	Sweet or Sour Service
<b>Design Pressure</b>	720 - 1440 psig (up to 2160 psig optional)
<b>Design Temperature</b>	-20 °F to 250 °F (-29 °C to +232 °C)
<b>Retention Time</b>	1 minute (customizable)
<b>Orientation</b>	Horizontal, skid-mounted
<b>Phases (Variants)</b>	2-Phase/ 3-Phase/ 4-Phase
<b>Internals</b>	Inlet Deflector, Quenching Baffle, Vane Pack/ Coalescer, Demister Pad, Weir Plate, Sand Jet (optional).
<b>Materials</b>	Carbon Steel, Stainless Steel, Duplex, CRA (per service requirements).
<b>Instrumentation</b>	Level gauges, level controllers, pressure transmitters, temperature transmitters, PCV, LCV, PSV, Chart Recorder (Analog/ Digital), Turbine Meter, Orifice Meter, HHLS for ESD.
<b>Nozzles (Typical)</b>	Inlet 3-8", Oil outlet 3"/ 4", Water outlet 3"/ 4", Gas outlet 3"/ 4"/ 6", drains, vents and sample points.
<b>Mounting</b>	Trailer or skid-mounted configuration, onshore/ offshore frames.
<b>Accessories</b>	Shrinking Tester

## Test Separator Sizes

While our separators can be engineered to match each client's unique operating parameters; flowrate, pressure, temperature, and medium. The table below presents the standard configurations that have proven most popular in the MENA region.

Sl. #	Design Pressure			Vessel Size (ID x Length)		Liquid Capacity	Skid Dimensions (L x W x H)	
	Psi(g)	Bar(g)	Mpa	In x Ft	Cm x Cm	BOPD	Ft	Mtr
1	1440	99	9.93	36" x 10'	76 x 305	8,500	15 x 7.5 x 8	4.6 x 2.3 x 2.5
2	1440	99	9.93	42" x 10'	107 x 305	10,000	15 x 7.5 x 9	4.6 x 2.3 x 2.7
3	1440	99	9.93	42" x 15'	107 x 457	12,000	20 x 7.5 x 9	6.1 x 2.3 x 2.7
4	1440	99	9.93	48" x 10'	122 x 305	13,000	15 x 8 x 9.5	4.6 x 2.5 x 2.9
5	1440	99	9.93	48" x 12'	122 x 366	19,000	17 x 8 x 9.5	5.2 x 2.5 x 2.9
6	1440	99	9.93	48" x 15'	122 x 457	13,000	15 x 8 x 9.5	4.6 x 2.5 x 2.9
7	1440	99	9.93	48" x 20'	122 x 457	28,000	20 x 8 x 9.5	6.1 x 2.5 x 2.9
8	2160	149	14.9	42" x 10'	61 x 305	12,000	15 x 8 x 9.5	4.6 x 2.5 x 2.9
9	2160	149	14.9	42" x 15'	107 x 457	14,000	20 x 8 x 9.5	6.1 x 2.5 x 2.9
10	2160	149	14.9	48" x 20'	122 x 610	32,000	20 x 8 x 9.5	6.1 x 2.5 x 2.9

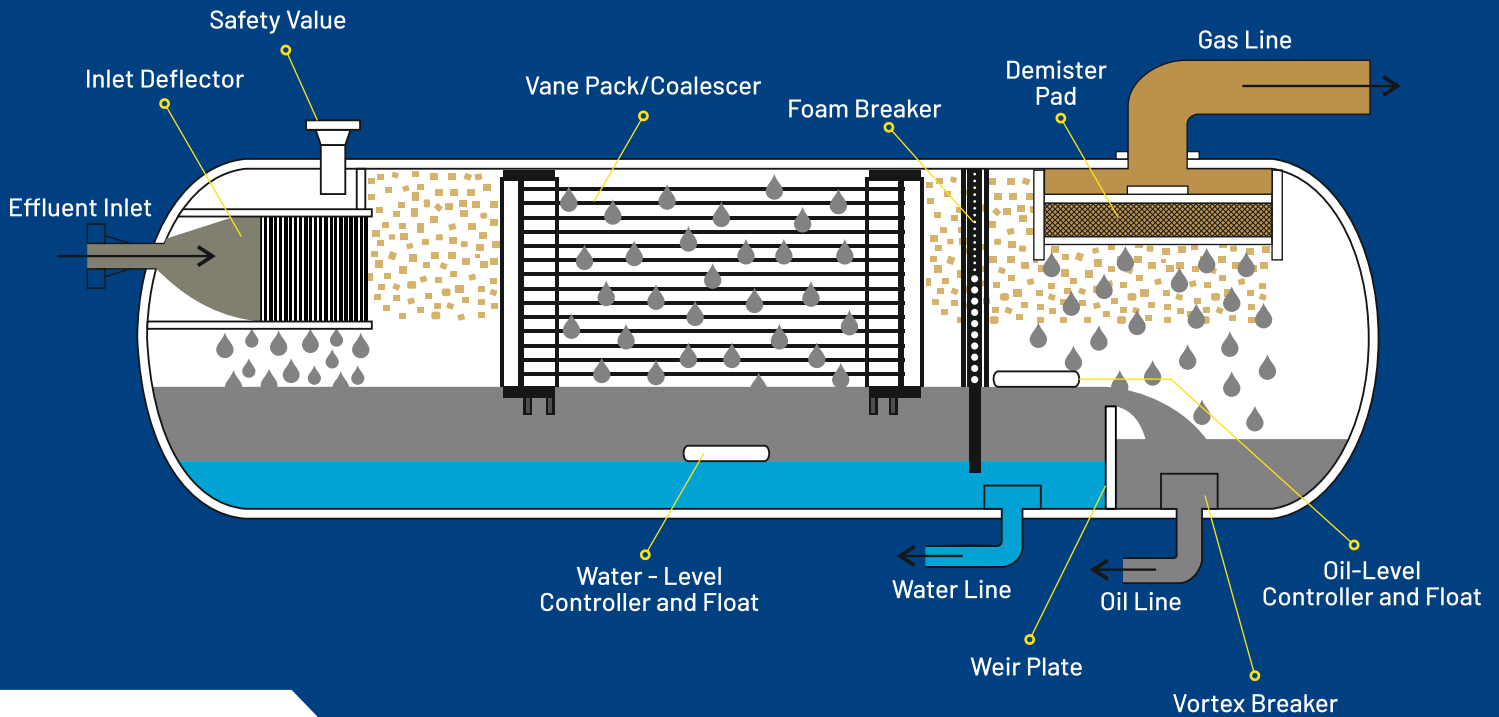
## Key Features & Options

- Multi-phase separation capability (oil, gas, water, solids)
- Designed for both onshore and offshore deployment
- Customizable retention time and flow capacity
- Sour service compliance with NACE standards
- Optional insulation, heating, or exotic metallurgy
- Integration with Data Acquisition Systems (DAQ)
- Available in compact trailer-mounted versions for mobility

## Value Proposition

At SPARKLET, we go beyond equipment supply. Our test separators are built on the values of dependability, flexibility, and customer-first ethics. With a friendly, collaborative approach, we ensure that every solution is engineered with people before profits, delivering an exceptional customer experience while meeting the most stringent technical and HSE requirements.

## Conventional Separator



**SPARKLET ENGINEERS**  
**MIDDLE EAST FZE**



Note: This document and its contents are proprietary to SPARKLET ENGINEERS MIDDLE EAST FZE and are provided for informational purposes only. No part of this document may be reproduced, distributed, or extracted without prior written permission. Specifications are subject to change without notice in line with continuous improvement and client-specific requirements

Approval:

Prepared by	Prepared by	Approved by
Sales Team	Engineering manager	Director

Revision History:

Rev	Date
0	01.01.2025